

# MEGA AI WORKSHOP REPORT



## GOVERNMENT COLLEGE

RAJAHMUNDRY, ANDHRA PRADESH | **AUTONOMOUS**  
ISO - 21001 : 2018, ACCREDITED BY - NAAC - A+  
AFFILIATED TO ADIKAVI NANNAYA UNIVERSITY



Department of Computer Science  
in association with  
NXTWAVE, Telangana

### MEGA AI WORKSHOP

“ **BUILD YOUR OWN GENERATIVE AI MODEL** ”

**FREE**

**Date: 29 June 2025 (Sunday) @ 10: 00 AM**



**MODE:  
ONLINE**



**1<sup>ST</sup>, 2<sup>ND</sup> & 3<sup>RD</sup>  
YEAR  
DEGREE  
STUDENTS**



**PARTICIPATION  
CERTIFICATES  
TO ALL**



**PROJECT  
COMPLETION  
CERTIFICATE**

**No Coding Knowledge Required. Open to All**

#### ORGANIZING COMMITTEE

- Dr. Suneel Kumar Duvvuri- Convenor
- Smt. U Sandhya Rani- Organizing Secretary
- Sri. H Deva Raju- Organizing Secretary
- Sri. P. Narsinga Rao - Member
- Sri. D. Seetha ramulu - Member



Scan the Code  
for Registration



#### KEY RESOURCE PERSON



**Mr. Abhinav Devaguptapu**  
*Expert Trainer for DRDO and Indian Army  
Curriculum Development Manager, NXTWAVE*



#### CHIEF PATRON

**Dr. Narayana Bharath Gupta, IAS**  
Director of Collegiate Education,  
Government of Andhra Pradesh

#### PATRONS

**Dr. C. Krishna**  
Joint Director

**Dr. P V. Krishnaji**  
RJDCE (Zone-I & II),  
Collegiate Education,  
Government of Andhra Pradesh

#### PRESIDENT

**Prof. Ramachandra R K**  
Principal  
Government College (A), RJY

**Date:** 29th June 2025 (Sunday) **Time:** 10:00 AM onwards

**Mode:** Online

**Organized by:** Department of Computer Science, Government College (A),  
Rajamahendravaram

**In Association With:** NXTWAVE, Telangana

## 1. Introduction

The Department of Computer Science successfully organized a *Mega AI Workshop* in collaboration with **NXTWAVE, Telangana**, on **29th June 2025**. The workshop aimed to introduce students to the emerging field of Generative Artificial Intelligence and empower them to build their own AI models without requiring prior coding knowledge.

## 2. Objectives of the Workshop

- To provide foundational knowledge of Artificial Intelligence and its real-world applications.
- To enable students to gain hands-on experience in building generative AI models.
- To expose students to industry-grade AI tools used in modern development environments.
- To boost students' confidence in AI technologies and enhance their employability through certification.

## 3. Participation Overview

- **Number of Registrations:** 1218 students
- **Number of Participants:** 1139 students
- **Number of Project Submissions:** 42 students

The high registration and participation rate is a testament to the growing interest among students in cutting-edge technologies like Generative AI.

## 4. Key Resource Person

The technical sessions were led by **Mr. Abhinav Devaguptapu**, a reputed **Curriculum Development Manager at NXTWAVE** and an **expert trainer for DRDO and the Indian Army**. His sessions were insightful, beginner-friendly, and hands-on, making complex AI topics accessible to all students.

## 5. Highlights of the Workshop

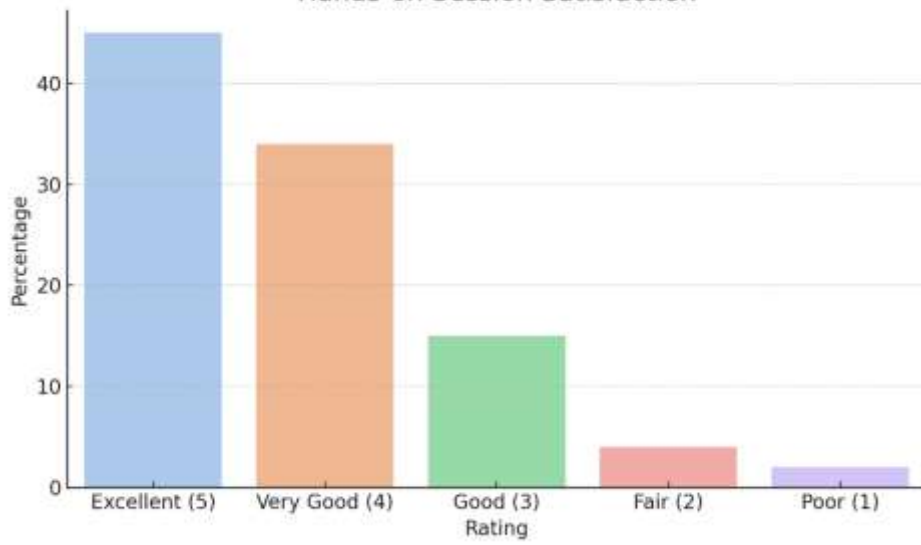
- Open to **1st, 2nd, and 3rd year Degree students** from various disciplines.
- **No prior coding knowledge** was required, making it inclusive and approachable for all learners.
- Participants engaged in building their **own Generative AI models** using real-time tools guided by the expert.
- All participants received a **Participation Certificate**, and students who completed and submitted their projects were awarded a **Project Completion Certificate**.

## 6. Engagement and Feedback

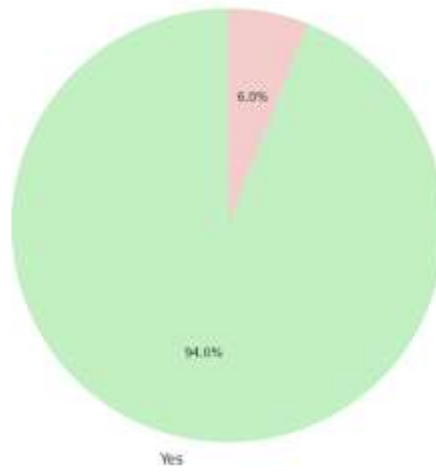
Students actively engaged in the interactive sessions, showing keen interest during the hands-on activities. Their enthusiasm was reflected in the number of queries, interactions, and project submissions. The workshop fostered a sense of innovation and curiosity, which are vital traits in the field of AI.



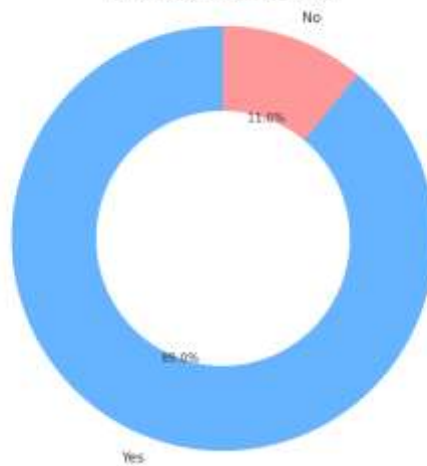
Hands-on Session Satisfaction



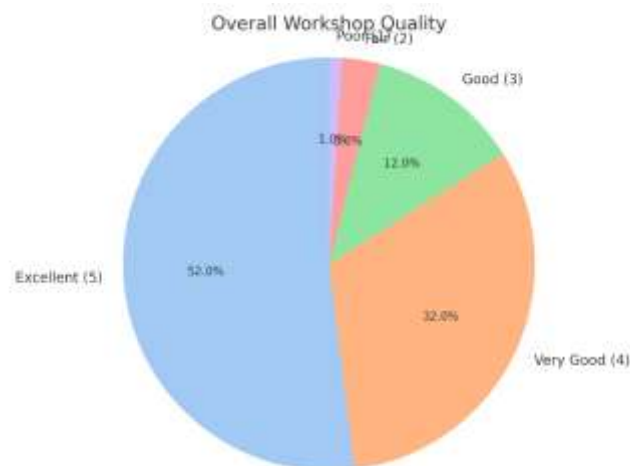
Certificate Usefulness for Resume



Increased Interest in AI



Common Words in Student Feedback



## 7. Outcomes

- Students acquired **practical exposure** to AI development environments.
- Gained insights into **Generative AI** and its implementation.
- Earned their **AI Mastery Certificate**, enhancing their academic and professional profiles.
- Developed foundational skills that are highly relevant to the current industry trends.

## 8. Acknowledgements

We extend our heartfelt thanks to:

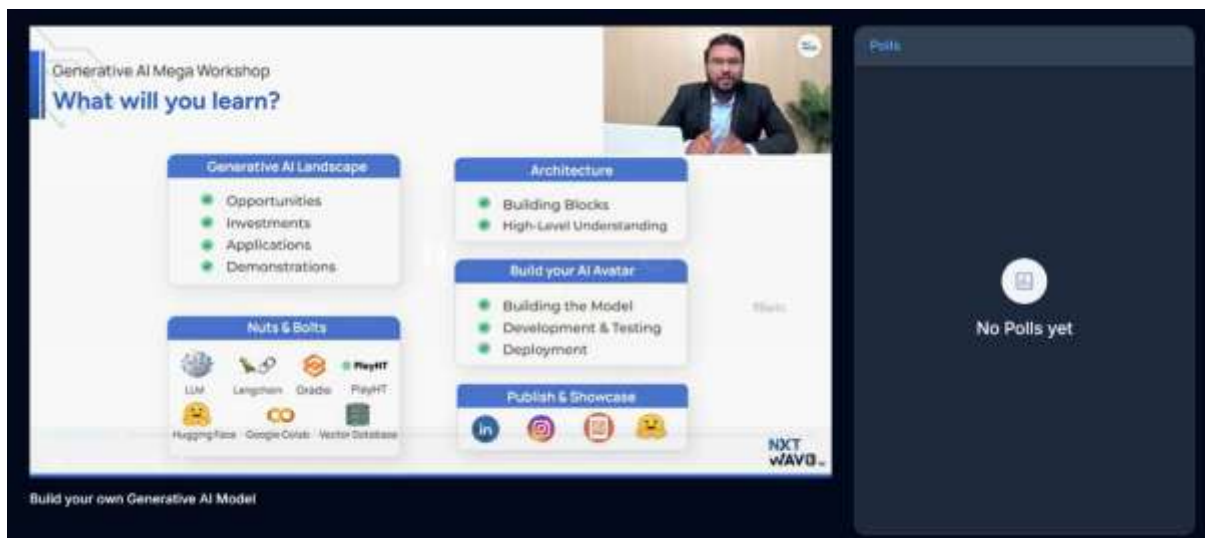
- **Dr. Narayana Bharath Gupta, IAS** – Director of Collegiate Education, Government of Andhra Pradesh (Chief Patron)
- **Dr. C. Krishna** – Joint Director
- **Dr. P. V. Krishnaji** – RJDCE (Zone-I & II)
- **Prof. Ramachandra R. K** – Principal, Government College (A), Rajamahendravaram
- **Dr. Suneel Kumar Duvvuri** – Convenor
- **Smt. U. Sandhya Rani & Sri. H. Deva Raju** – Organizing Secretaries
- **Sri. P. Narsinga Rao & Sri. D. Seetha Ramulu** – Members

Their continued support and guidance made this event a grand success.

## 9. Conclusion

The Mega AI Workshop marked a significant milestone in fostering digital literacy and innovation among students. It successfully bridged the gap between academic knowledge and industrial skills in AI. With an overwhelming response, strong participation, and meaningful outcomes, the workshop stood as a testament to our commitment to empowering future-ready graduates.

## 10. Gallery



Generative AI  
II  
Mega Workshop

Build your own Generative AI Model

Search - International Day of the Teacher

Polls

No Polls yet

Build your own Generative AI Model

Search

Polls

No Polls yet

webinar.ccbp.in/webinars/ai-workshop

Build your own Generative AI Model

Search

Three friends from Hyderabad, Rishi, Chirag, and Ansh, were stuck in a creative rut and struggling to make ends meet. One night, after a few too many drinks, they hatched an ambitious plan - to just off the digital world the way they were used to.

Now, the mission of the project had been clearly defined in the minds of the three friends for months. Chirag, the tech-savvy one, was in charge of creating the system and debugging the story, and that, with the spirit of pure sharing personality, would deliver the goods with the digital fire burned out the others.

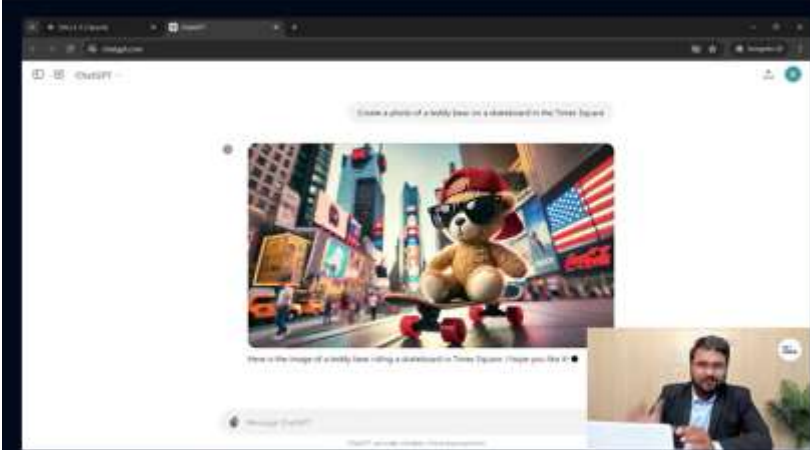
The plan seemed - well, not so much. But as they went forward, everything started to fall into place. They had a goal, they had a team, and they had a mission. It was time to start building.

And when they thought they had pulled it off, a kind of fate intervened to ensure the entire operation. In a dramatic moment, the friends had to use all of their skills and resources to maintain the system and make it a priority.

In the end, the team was left with a sense of accomplishment as they looked at the three friends behind the value of loyalty, teamwork, and the importance of having a great working plan. With their goals in the air and their bond stronger than ever, they knew that this was only the beginning of their adventure.

Polls

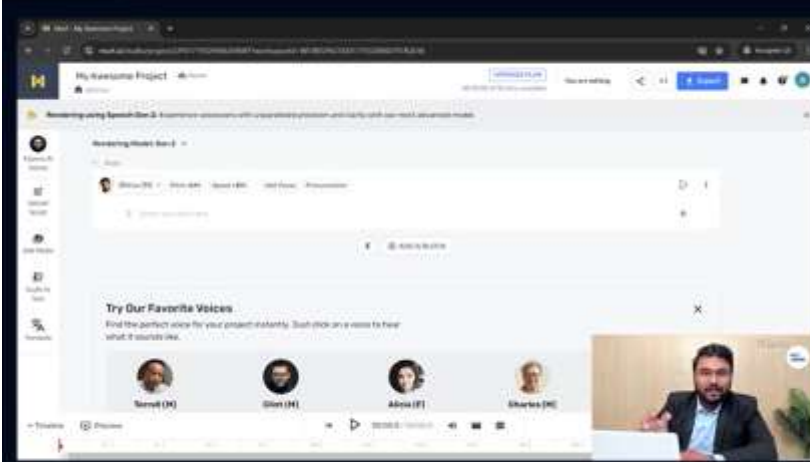
No Polls yet



Build your own Generative AI Model

Polls

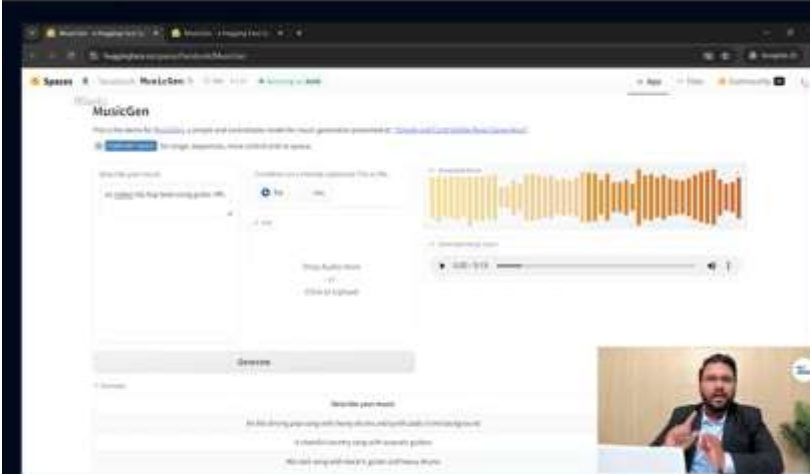
No Polls yet



Build your own Generative AI Model

Polls

No Polls yet



Build your own Generative AI Model

Polls

No Polls yet



**Tell us about your site**

Website type: \_\_\_\_\_

Headlines: \_\_\_\_\_

Address: \_\_\_\_\_

Description: \_\_\_\_\_

Build your own Generative AI Model

Polls

No Polls yet

### Enormous Possibilities

**Agriculture**

**Education**

**Healthcare**

**Manufacturing**

NXT WAVB

Build your own Generative AI Model

Which of the following fields use Generative AI applications?

Health Care	3%
Education	10%
<b>Agriculture</b>	1%
Manufacturing	3%
<b>ALL OF THE ABOVE</b>	<b>81%</b>

**LLM**

Resources: CPU/GPU/TPU (Billions), Memory (Daily/night), Time & Cost (Months, 100% of cost), Datasets (PetB Bytes)

Research & Development: Top notch Researchers & Developers, Entrepreneurs

Knowledge → Large Language Model

Capabilities → Large Language Model

Large Language Model → Text → Inferring

Large Language Model → Weights → Architecture → LSTM

Large Language Model → Parameters → Transformers → GPT: Generative Pre-trained Transformer

No. of parameters: 1 Billion, 4.5 Billion, 125 Billion

NXT WAVB

Build your own Generative AI Model

Which of the following fields use Generative AI applications?

Health Care	3%
Education	10%
<b>Agriculture</b>	<b>7%</b>
Manufacturing	3%
<b>ALL OF THE ABOVE</b>	<b>81%</b>

webinar.ccbp.in/webinars/ai-workshop

## Fine-Tuning a Pre-Trained Model

Build your own Generative AI Model

Which of the following fields use Generative AI applications?

Health Care	3%
Education	10%
<b>Agriculture</b>	<b>1%</b>
Manufacturing	3%
<b>ALL OF THE ABOVE</b>	<b>81%</b>

Search

webinar.ccbp.in/webinars/ai-workshop

## QUIZ TIME !

Build your own Generative AI Model

Which of the following fields use Generative AI applications?

Health Care	3%
Education	10%
<b>Agriculture</b>	<b>1%</b>
Manufacturing	3%
<b>ALL OF THE ABOVE</b>	<b>81%</b>

webinar.ccbp.in/webinars/ai-workshop

Build your own Generative AI Model

Which of the following are advantages of using pre-trained models like GPT instead of building LLMs from scratch?

They are faster to train	17%
<b>They require fewer resources, people, effort, and money</b>	<b>57%</b>
They are more accurate in generating images	3%
They use less data for training	8%

Search - International Day of the Topics

webinar.ccbp.in/webinars/ai-workshop

Copy of ChatbotWithOpenAIUsingChatGPT

Adding Secret Variables in Hugging Face Account

- Open your Slack
- Click on Settings Button
- Clicked on Variables and secrets section
- Click on New Variable

Also make sure to add your OPENAI\_API\_KEY to Secret key

2:37:01 / 2:40:34

Build your own Generative AI Model

Polls

using pre-trained models like OPT instead of building LLMs from scratch?

01:38:14

They are faster to train	17%
They require fewer resources, people, effort, and money	57%
They are more accurate in generating images	15%
They use less data for training	8%

webinar.ccbp.in/webinars/ai-workshop

Copy of ChatbotWithOpenAIUsingChatGPT

Adding Secret Variables in Hugging Face Account

- Open your Slack
- Click on Settings Button
- Clicked on Variables and secrets section
- Click on New Variable

Also make sure to add your OPENAI\_API\_KEY to Secret key

2:38:29 / 2:40:34

Build your own Generative AI Model

Microsoft Store

Polls

using pre-trained models like OPT instead of building LLMs from scratch?

01:38:14

They are faster to train	17%
They require fewer resources, people, effort, and money	57%
They are more accurate in generating images	15%
They use less data for training	8%

webinar.ccbp.in/webinars/ai-workshop

Hugging Face

gpt2

gpt2-medium

gpt2-xl

gpt2-xl-4096

2:38:29 / 2:40:34

Build your own Generative AI Model

Polls

using pre-trained models like OPT instead of building LLMs from scratch?

01:38:14

They are faster to train	17%
They require fewer resources, people, effort, and money	57%
They are more accurate in generating images	15%
They use less data for training	8%



## Publish and Showcase

Share it on your LinkedIn

Highlight it on your Resume

Showcase it to your friends and family

NXT WAVB

Build your own Generative AI Model

### Polls

using pre-trained models like GPT instead of building LLMs from scratch?

01:38:14

They are faster to train	17%
They require fewer resources, people, effort, and money	57%
They are more accurate in generating images	15%
They use less data for training	8%

### Voice Cloning

Create a New Clone

Address: **100000** | Country: **com**

Build your own Generative AI Model

### Polls

using pre-trained models like GPT instead of building LLMs from scratch?

01:38:14

They are faster to train	17%
They require fewer resources, people, effort, and money	57%
They are more accurate in generating images	15%
They use less data for training	8%

## What we have learnt today?

Generative AI Applications

- Text
- Image
- Video
- Speech
- Music
- Code

Building your own Application

- Langchain
- LLM
- Hugging Face
- Google Collab
- Gradio
- PlayHT

NXT WAVB

Build your own Generative AI Model

### Polls

using pre-trained models like GPT instead of building LLMs from scratch?

01:38:14

They are faster to train	17%
They require fewer resources, people, effort, and money	57%
They are more accurate in generating images	15%
They use less data for training	8%

webinar.ccbp.in/webinars/ai-workshop

MIT WGBL

Build your own Generative AI Model

Posts

using pre-trained models like GPT instead of building LLMs from scratch?  
01-30-19

They are faster to train	17%
They require fewer resources, people, effort, and money	57%
They are more accurate in generating images	15%
They use less data for training	8%

webinar.ccbp.in/webinars/ai-workshop

"Small steps in the right direction Leads to Big Achievements"

Build your own Generative AI Model

Microsoft Data

Posts

using pre-trained models like GPT instead of building LLMs from scratch?  
01-30-19

They are faster to train	17%
They require fewer resources, people, effort, and money	57%
They are more accurate in generating images	15%
They use less data for training	8%

webinar.ccbp.in/webinars/ai-workshop

LinkedIn

Welcome back

Sign in with your account

Sign in with your phone number

Build your own Generative AI Model

Posts

using pre-trained models like GPT instead of building LLMs from scratch?  
01-30-19

They are faster to train	17%
They require fewer resources, people, effort, and money	57%
They are more accurate in generating images	15%
They use less data for training	8%

### Nuts and Bolts of Gen AI

Langchain, Gradio, Google Colab, LLM, Hugging Face, Vector Database, PlayHT

Build your own Generative AI Model

#### Polls

Which of the following is NOT an advantage of using pre-trained models like GPT instead of building LLMs from scratch?

01:38:14

They are faster to train	17%
They require fewer resources, people, effort, and money	57%
They are more accurate in generating images	15%
They use less data for training	8%

### Fine-Tuning a Pre-Trained Model

8th Grade Student Pre-Trained, Mathematics 8th Class, Fine-Tuning, 9th Mathematics Exam, Passed

Build your own Generative AI Model

#### Polls

Which of the following is NOT an LLM?

01:39:33

GPT 4	11%
Llama3	10%
GitHub Copilot	45%
BERT	32%

### Closed Vs Open

Closed	Open
Open AI GPT	Meta Llama 3

Build your own Generative AI Model

#### Polls

Which of the following is NOT an LLM?

01:39:33

GPT 4	11%
Llama3	10%
GitHub Copilot	45%
BERT	32%



# CERTIFICATE

Of Appreciation.

Awarded To

*Dr. Suneel Kumar Duvvuri*

Government College Autonomous Rajahmundry

## **You Made a Significant Contribution to AI Education**

Firstly, please accept our deepest gratitude.

Your support in organizing the AI workshop at your esteemed institution will open doors to many opportunities for your students. This workshop will inspire and encourage young minds to explore the vast potential of Artificial Intelligence (AI).

By adopting and advocating an unconventional outcome-focused workshop, you've accelerated a daring shift that not only redefines learning but also sets the stage for innovation.

Together, we are sparking a love for learning. Together, we are paving the way for a vibrant, technology-driven future.

A handwritten signature in black ink that reads 'Rahul A'.

**Rahul Attuluri,**  
CEO, NxtWave

***Thank you***